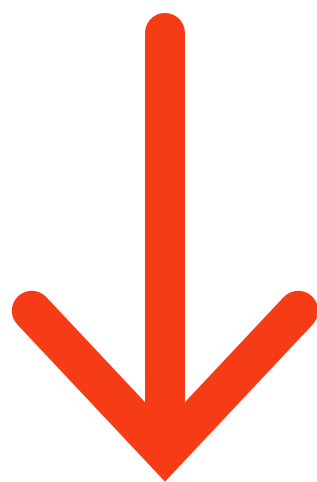
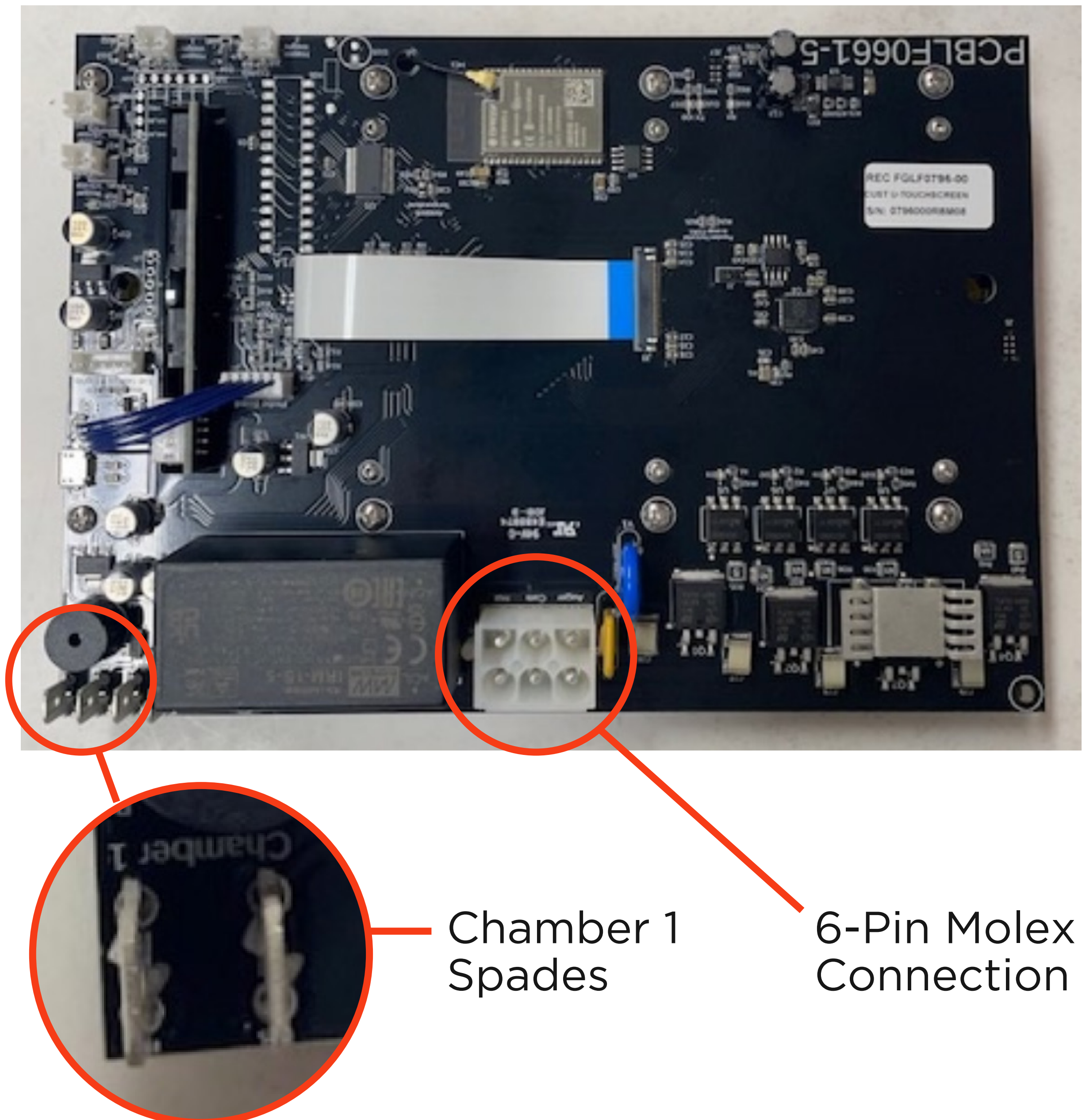


GRILLPRO WIFI INSTRUCTIONS



CONTROLLER INSTALLATION

- Bolt pattern and threading matches existing controller
- RTD connects to Chamber 1 male connectors
- Power connects via 6-pin Molex connection



CONNECTING TO WIFI

Download Pitts & Spitts App



Plug in the Grill

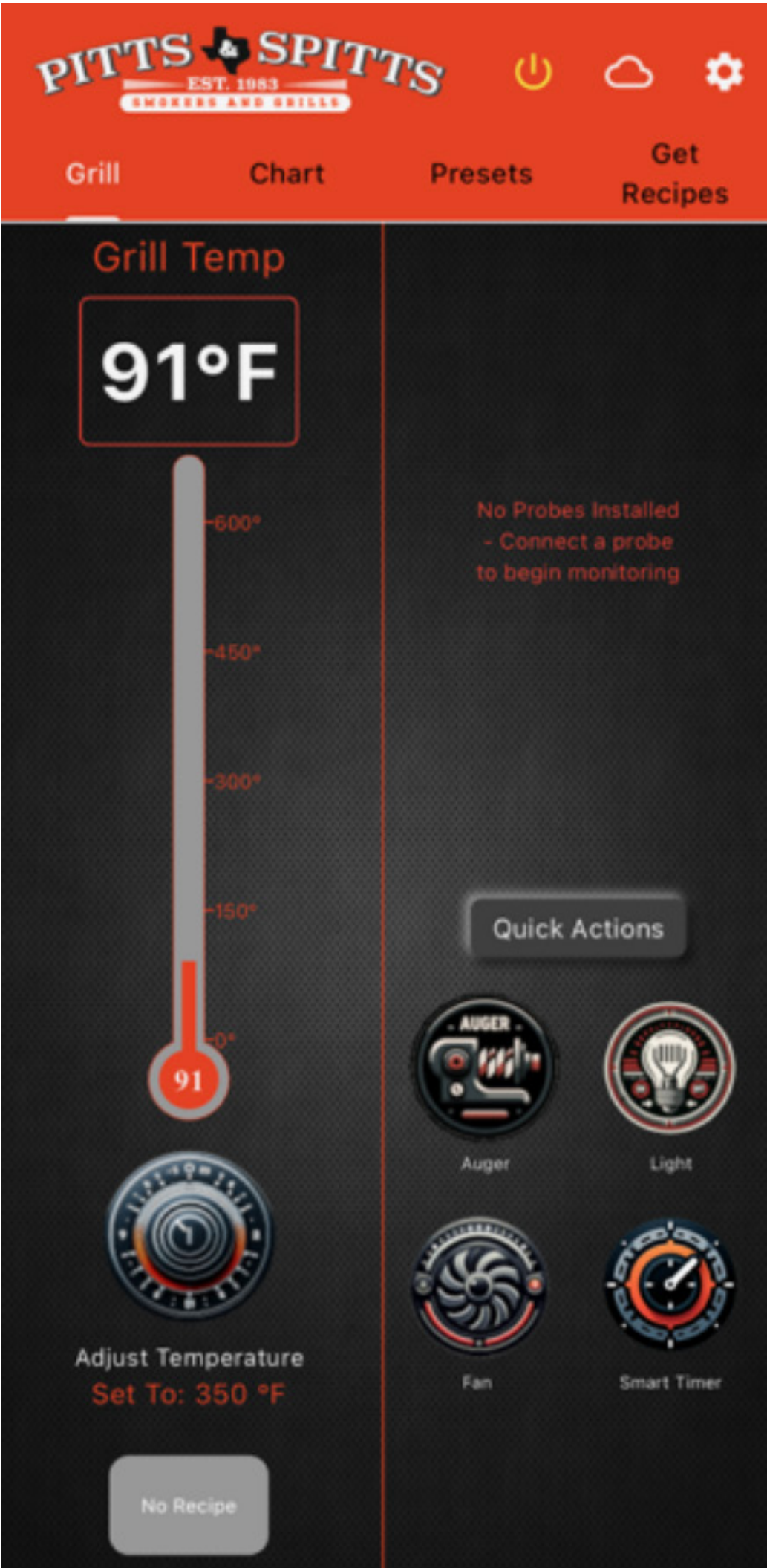


CONNECTING TO WIFI

Turn Controller On

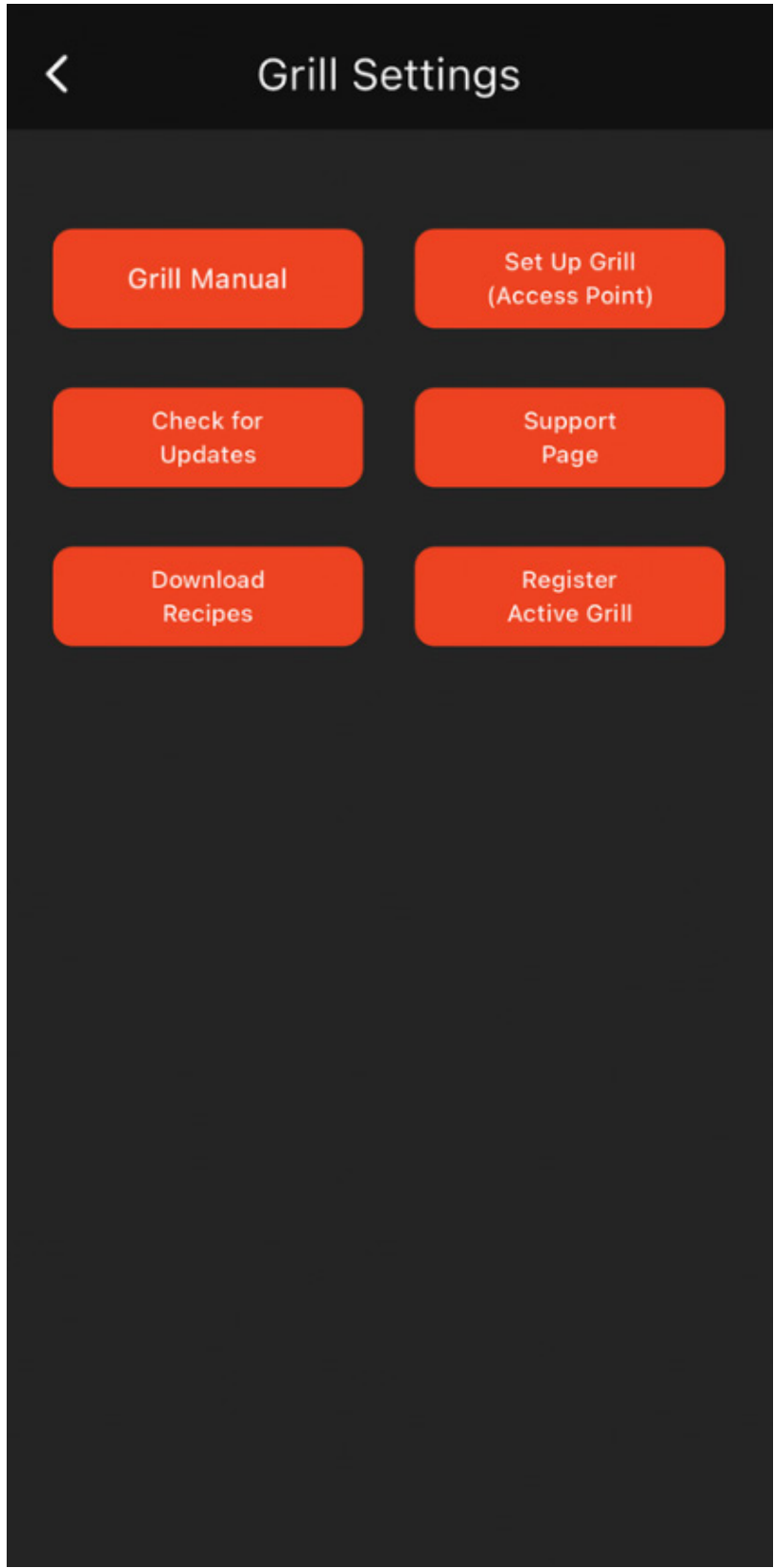


Open Pitts & Spitts App

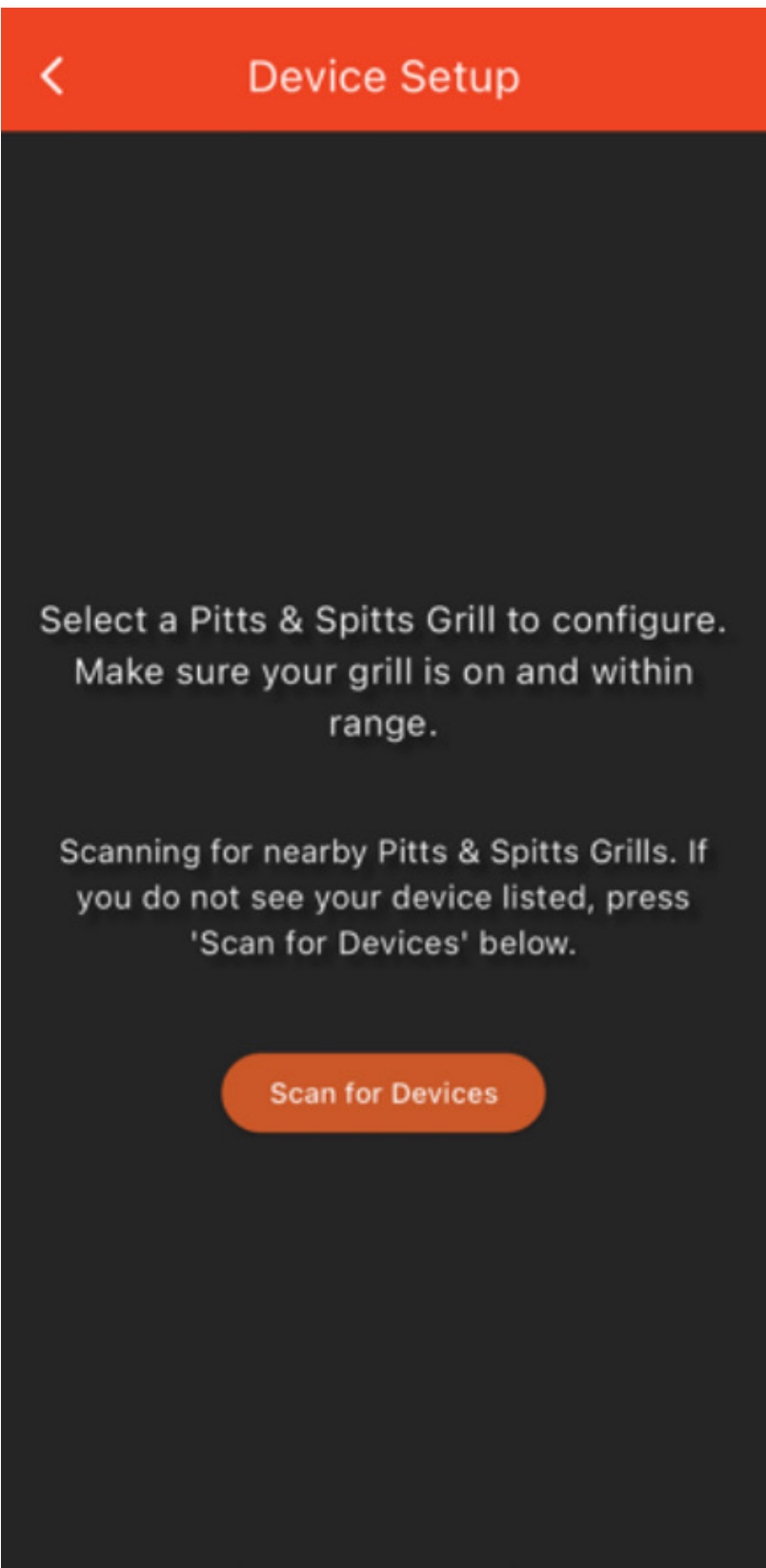
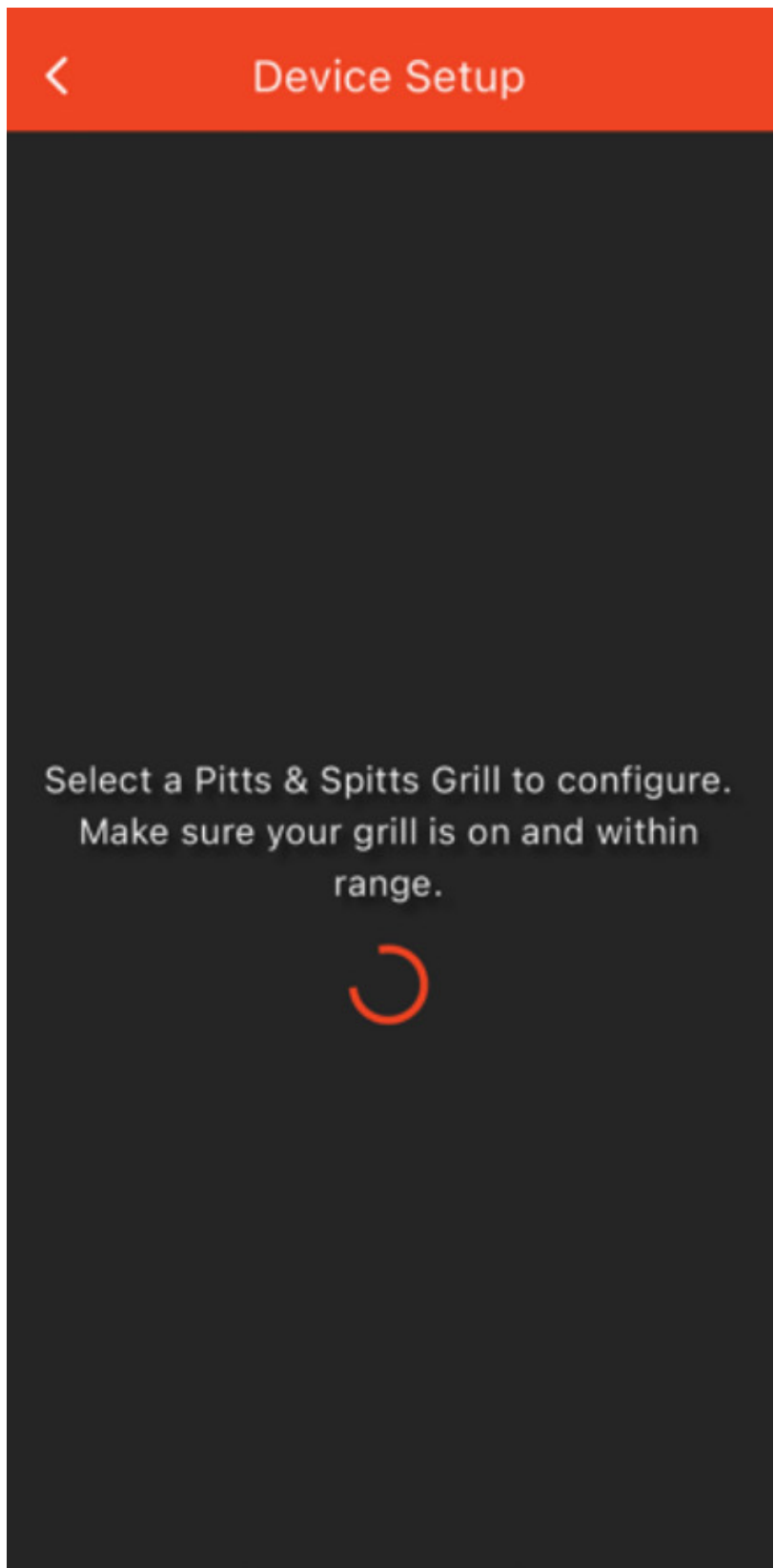


CONNECTING TO WIFI

Tap the Gear Icon in Top Right Corner

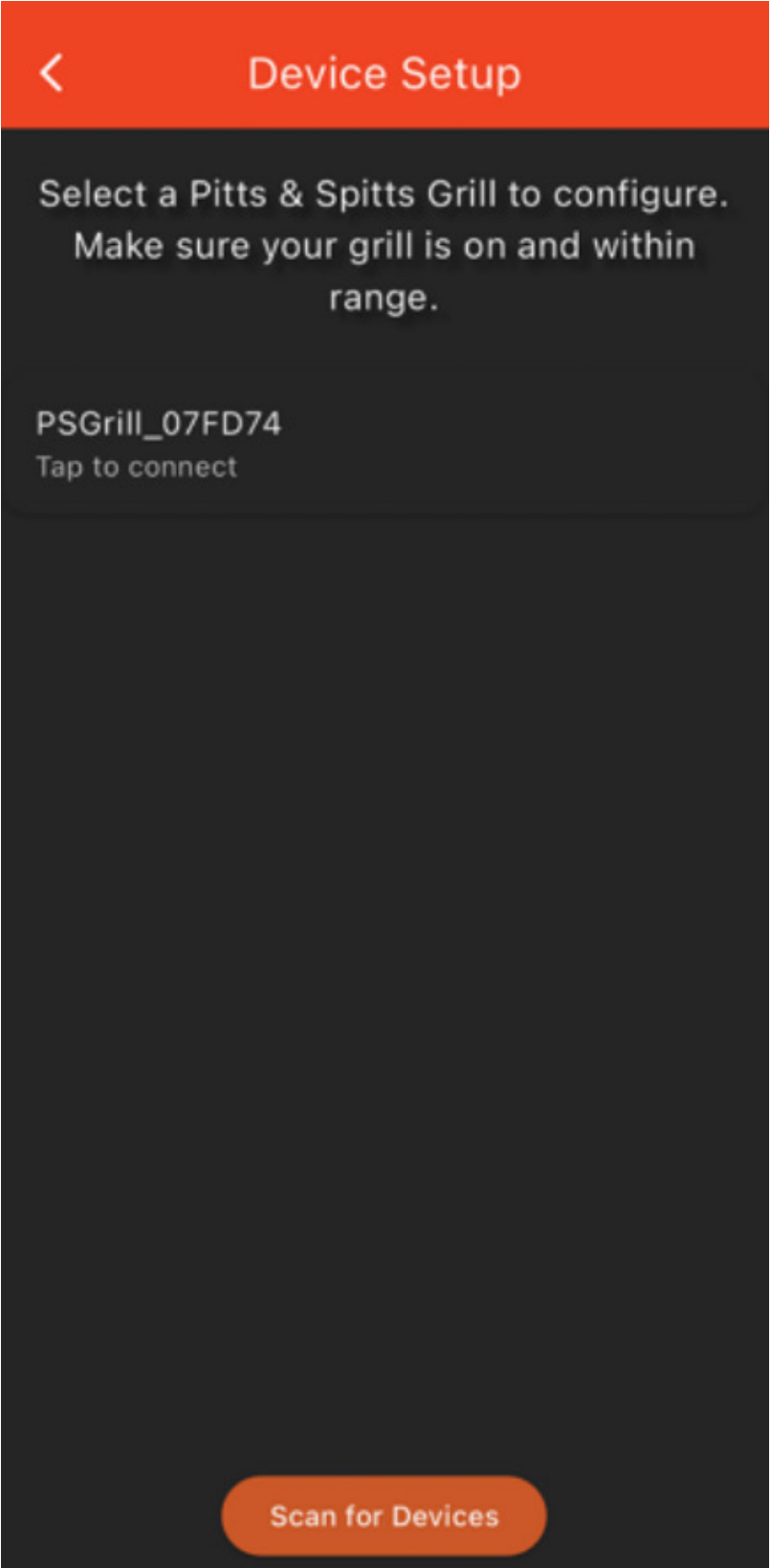


Tap Set Up Grill and Tap Scan for Devices

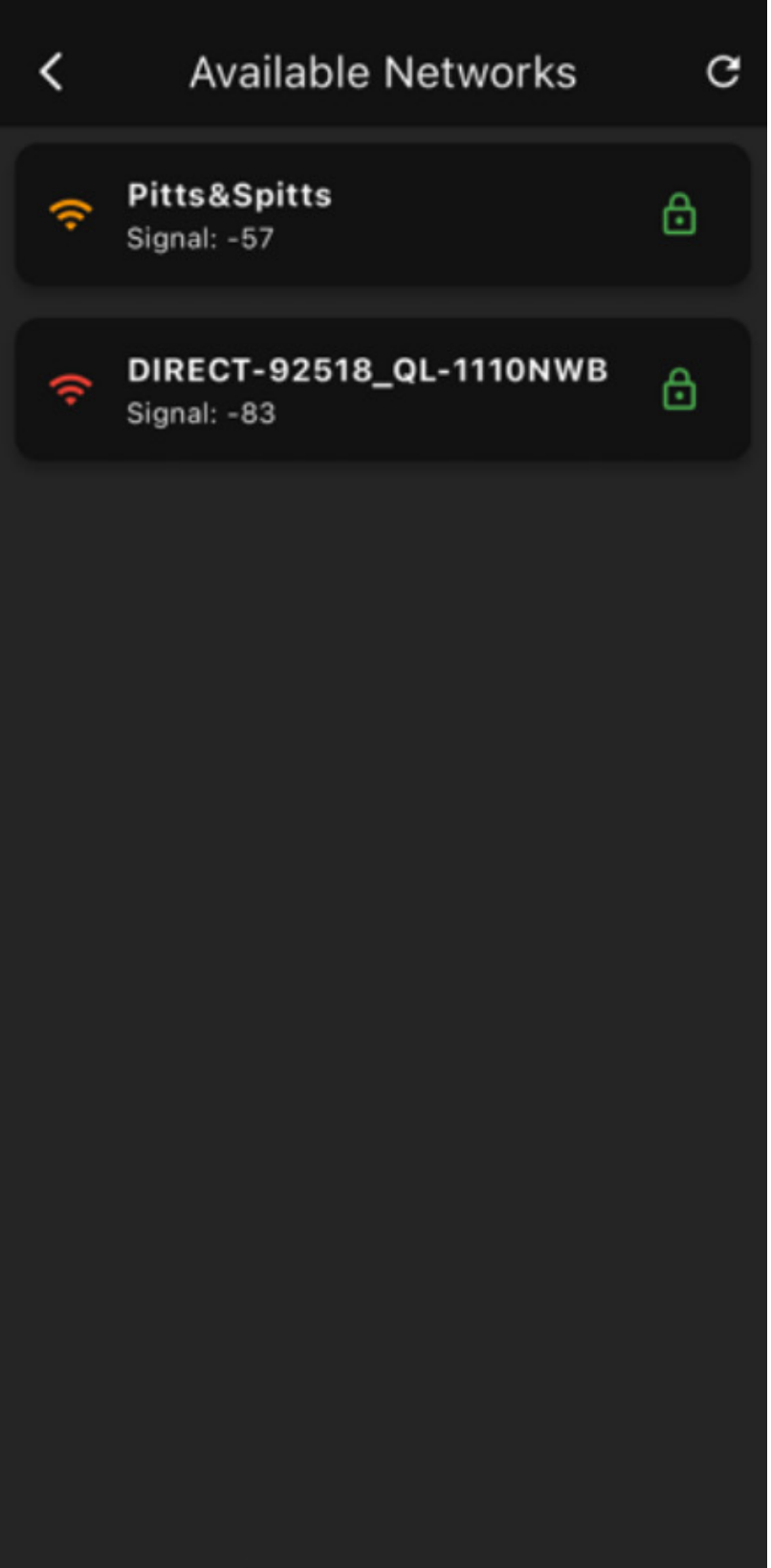


CONNECTING TO WIFI

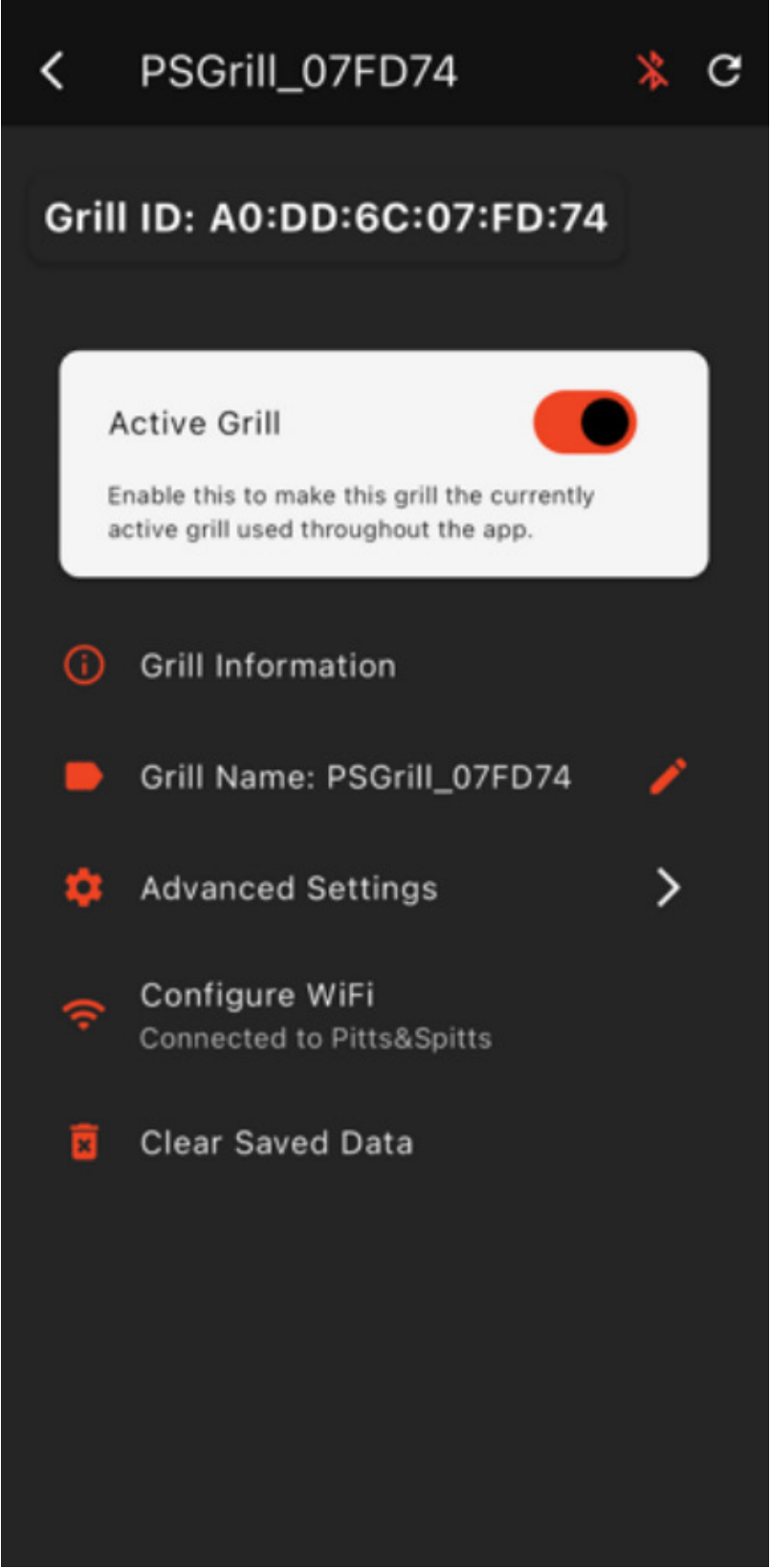
Select Grill



Select Network



Confirm Grill is Active



If Grill Not Found, Confirm BlueTooth Connection



*Let's Get
Smakin'*